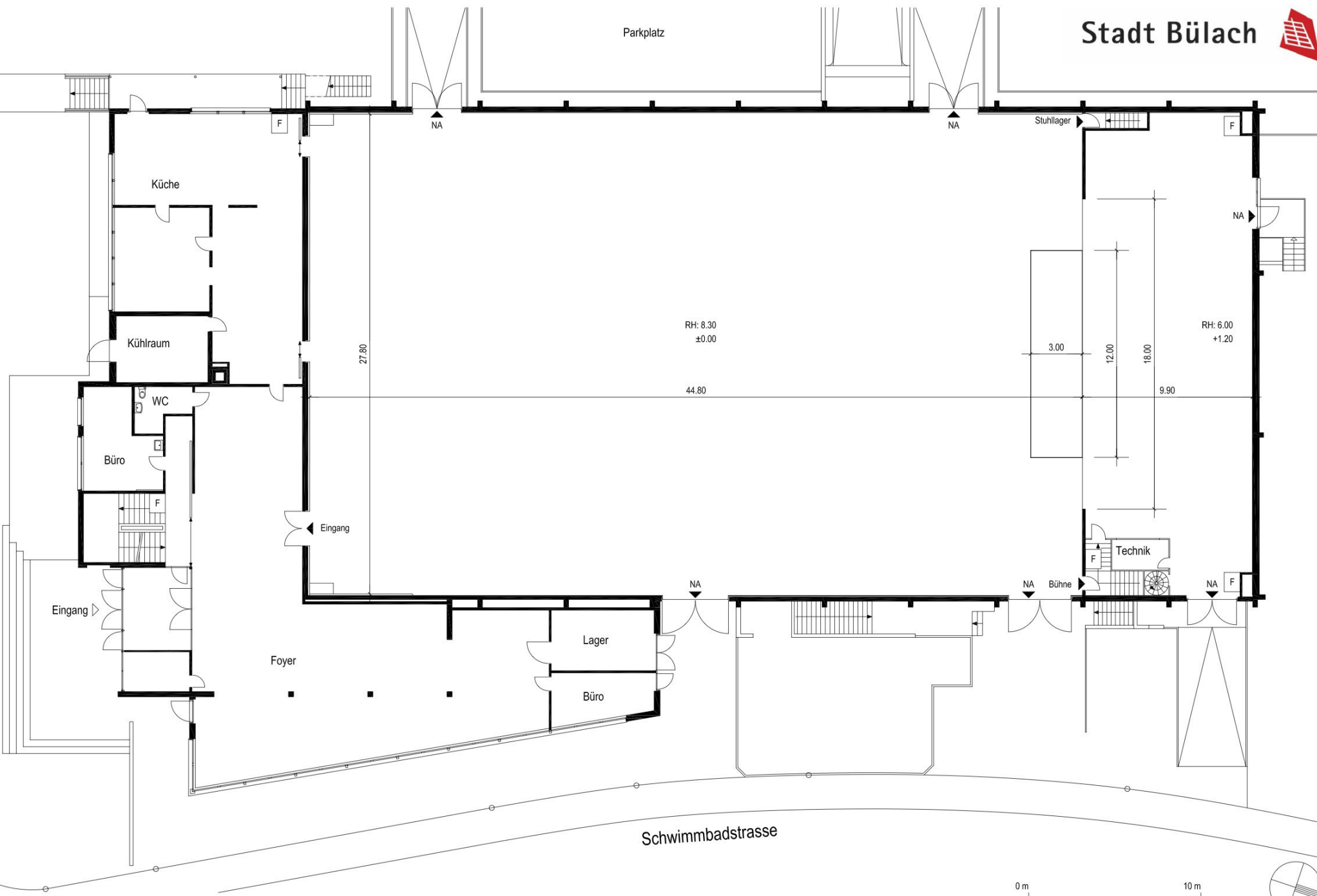


Allmendstrasse

Parkplatz



RH: 8.30
±0.00

44.80

RH: 6.00
+1.20

3.00

12.00

18.00

9.90

Eingang

Eingang

Foyer

Lager

Büro

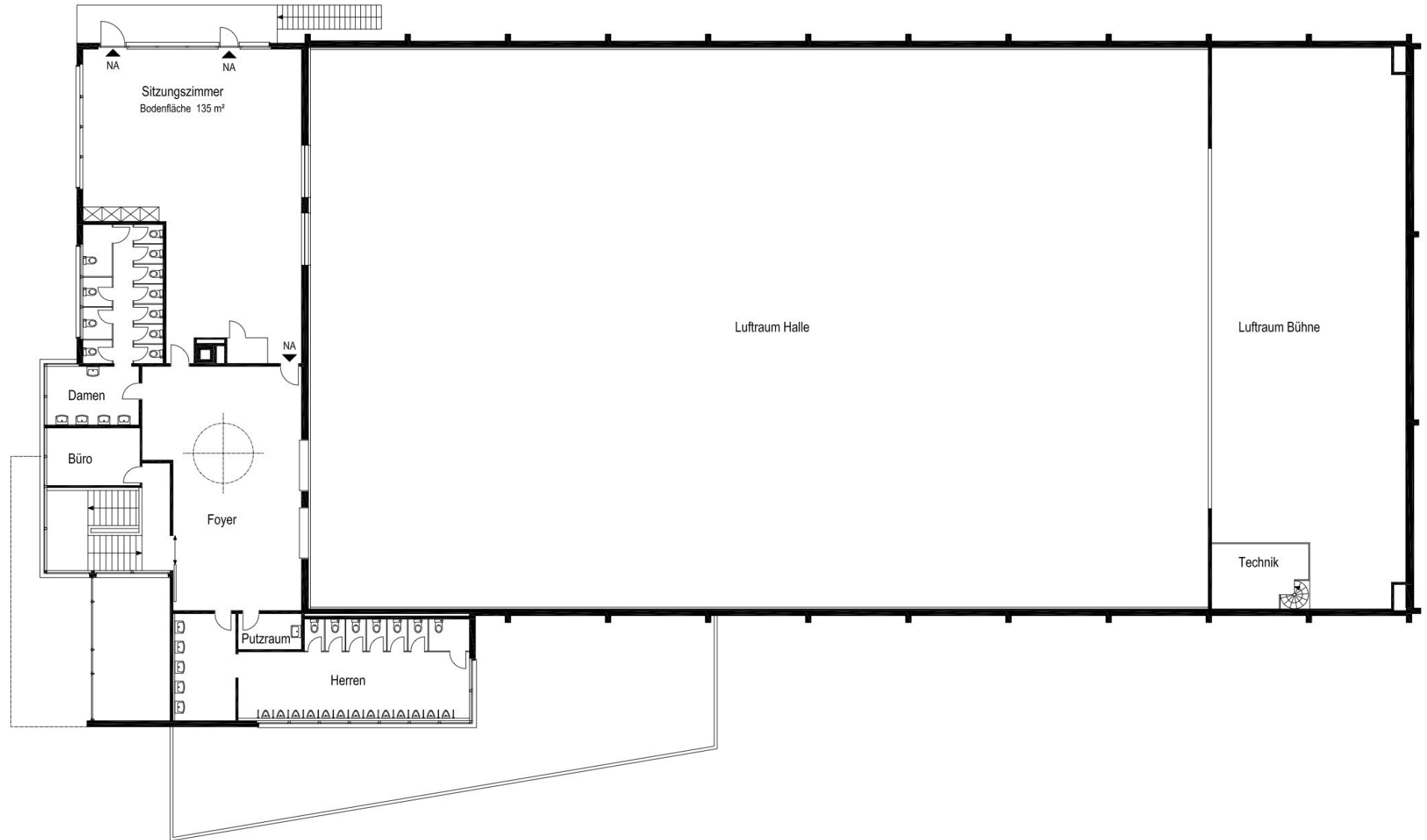
Technik

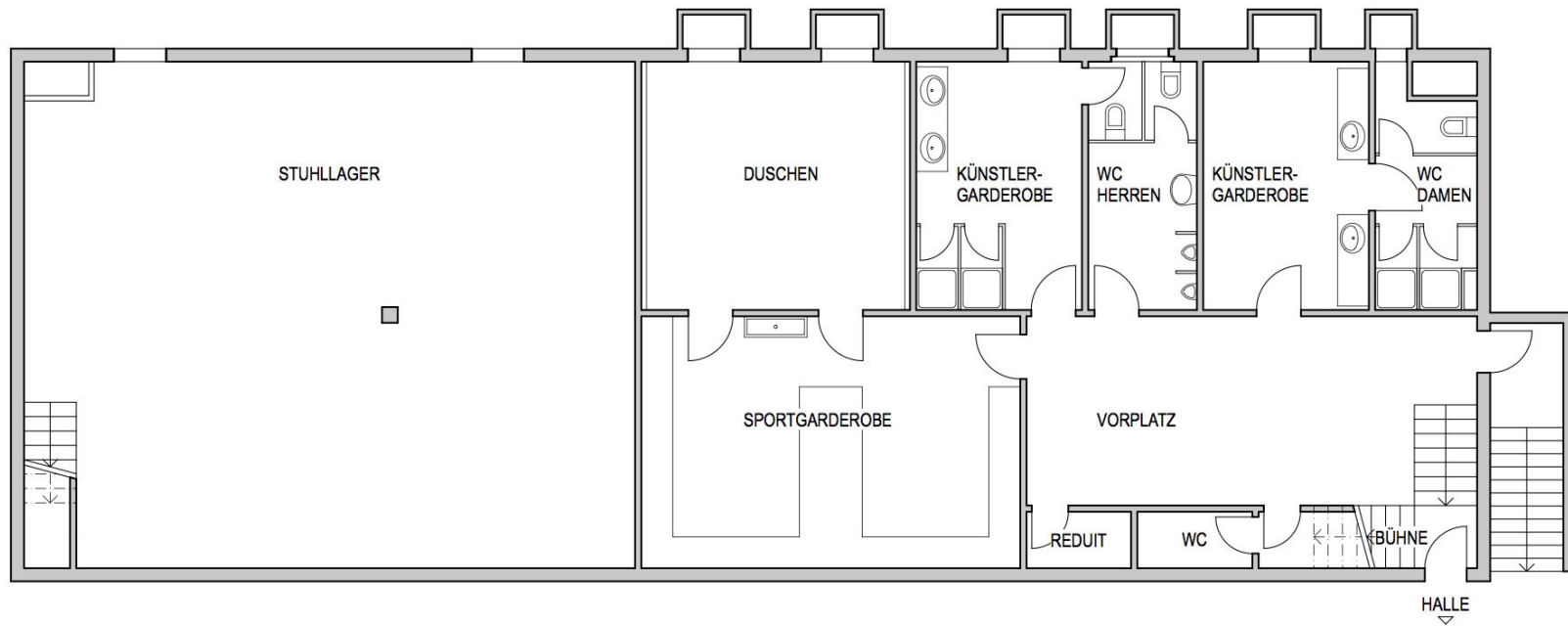
Bühne

Erdgeschoss

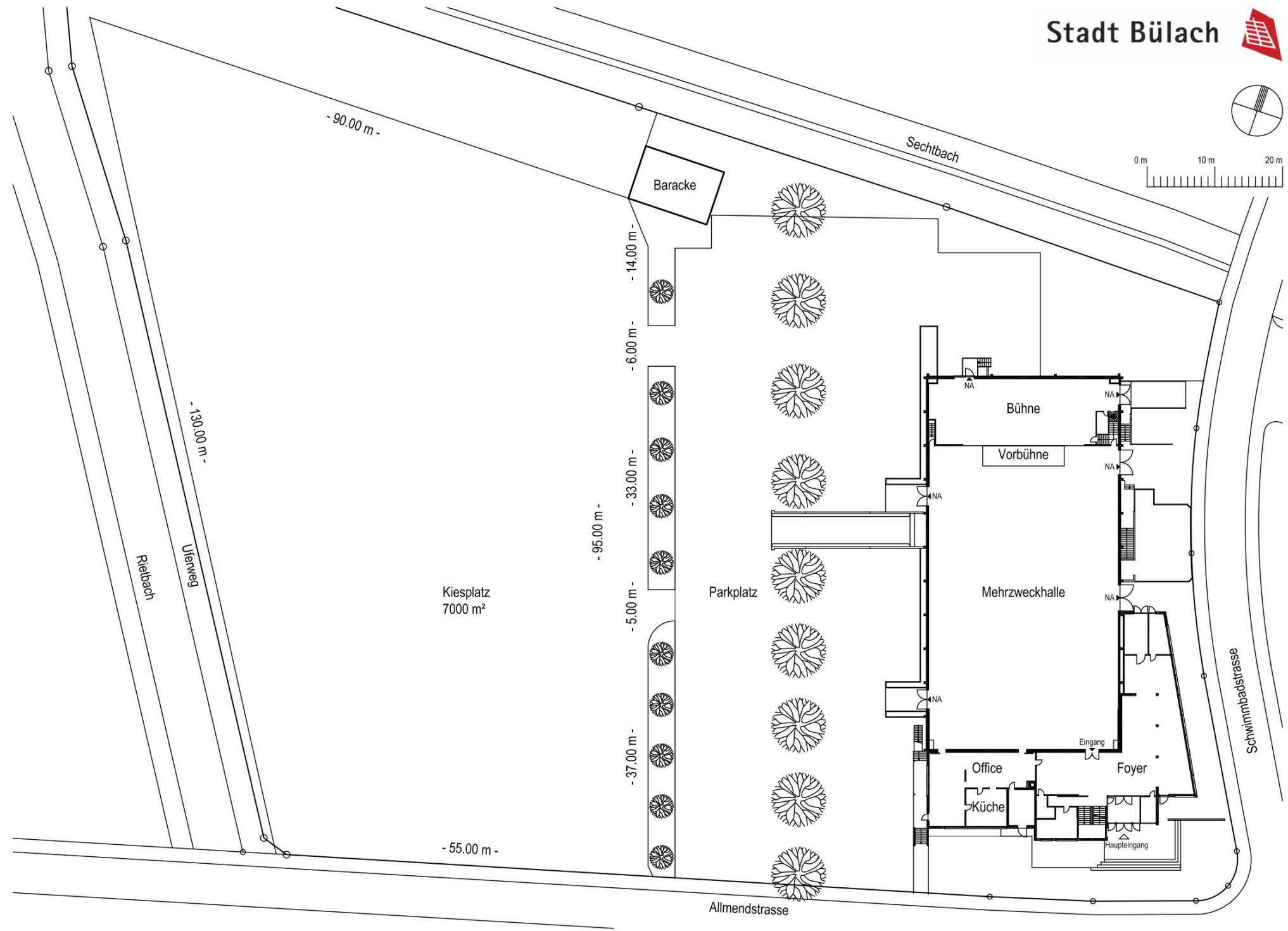
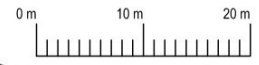
Schwimmbadstrasse







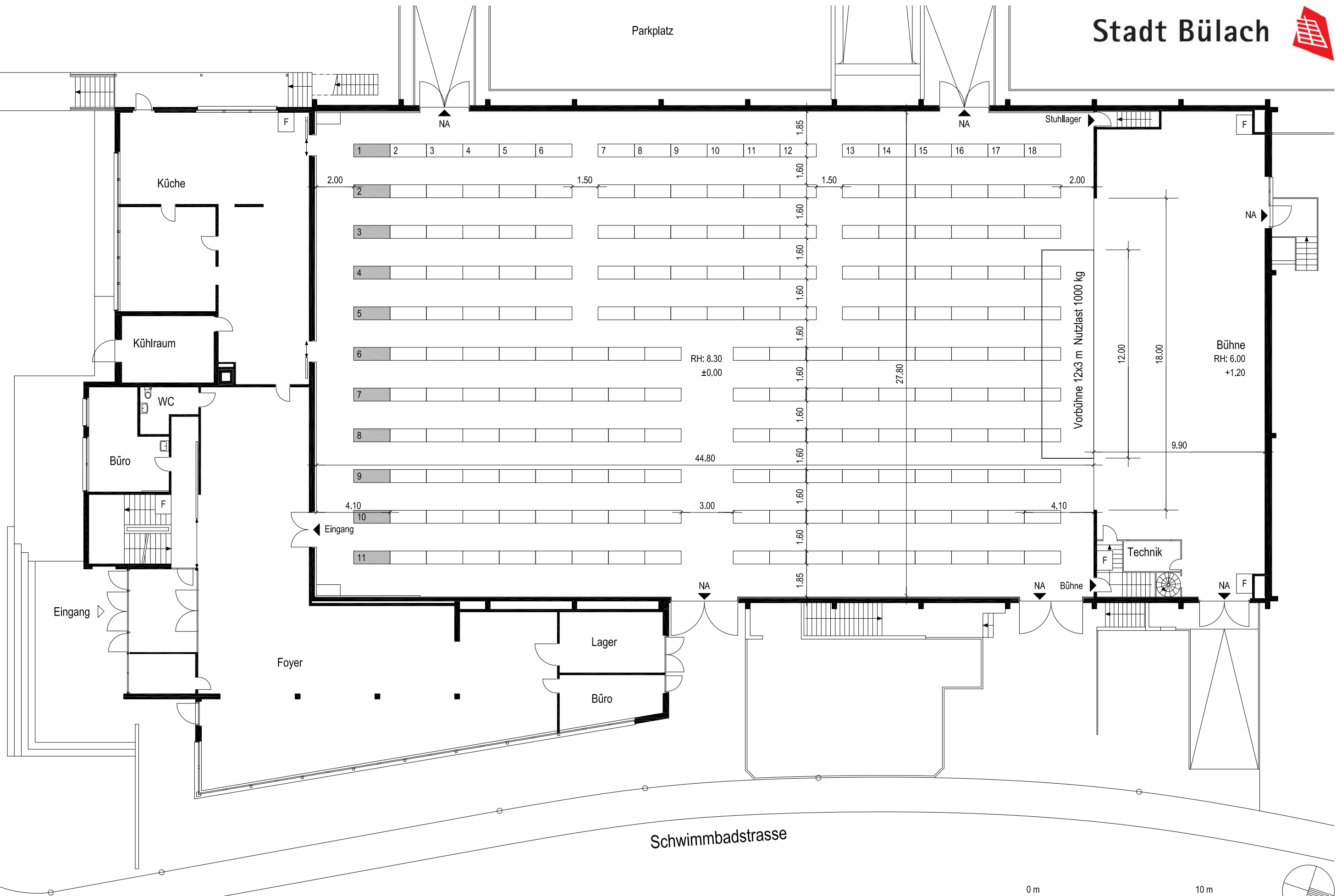
GARDEROBEN (ZWISCHENGESCHOSS UNTER BÜHNE)



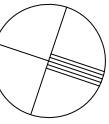


Allmendstrasse

Parkplatz



Bankettbestuhlung



198 Tische à 8 Personen = 1584 Personen
 198 Tische à 6 Personen = 1188 Personen

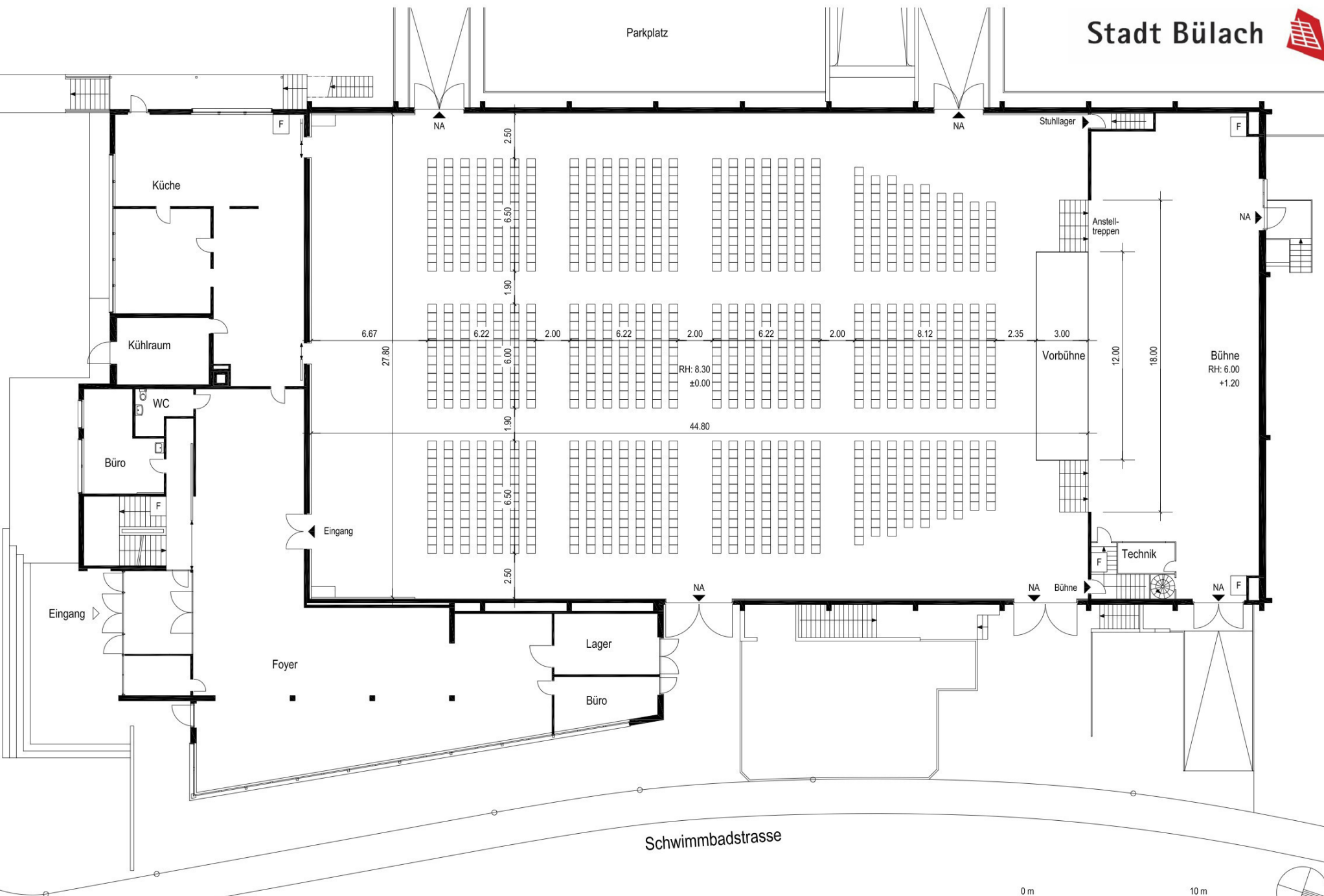
187 Tische à 8 Personen = 1496 Personen abzüglich
 187 Tische à 6 Personen = 1122 Personen abzüglich

176 Tische à 8 Personen = 1408 Personen abzüglich
 176 Tische à 6 Personen = 1056 Personen abzüglich

& 
 & 

Allmendstrasse

Parkplatz

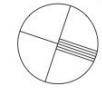
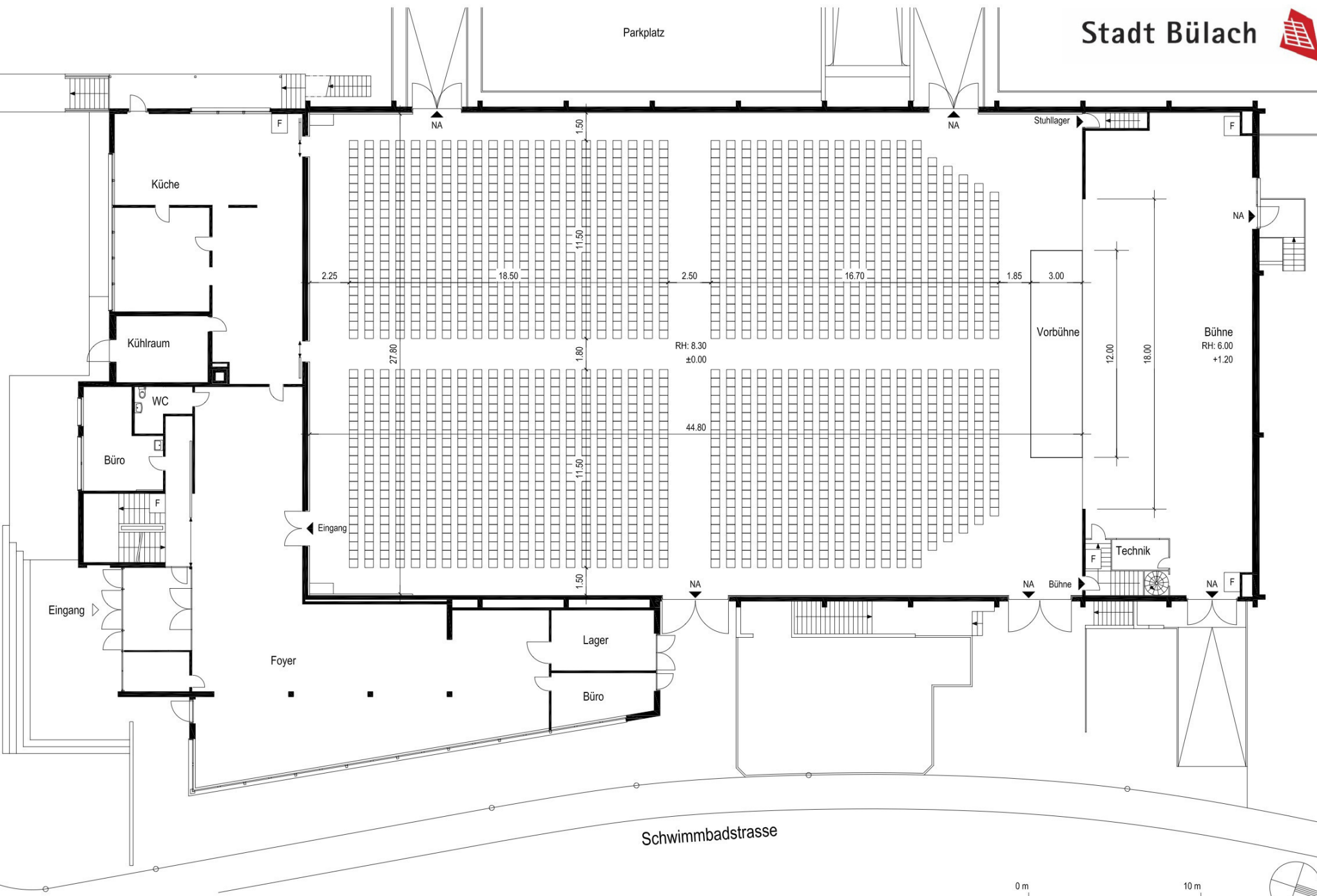


Schwimmbadstrasse



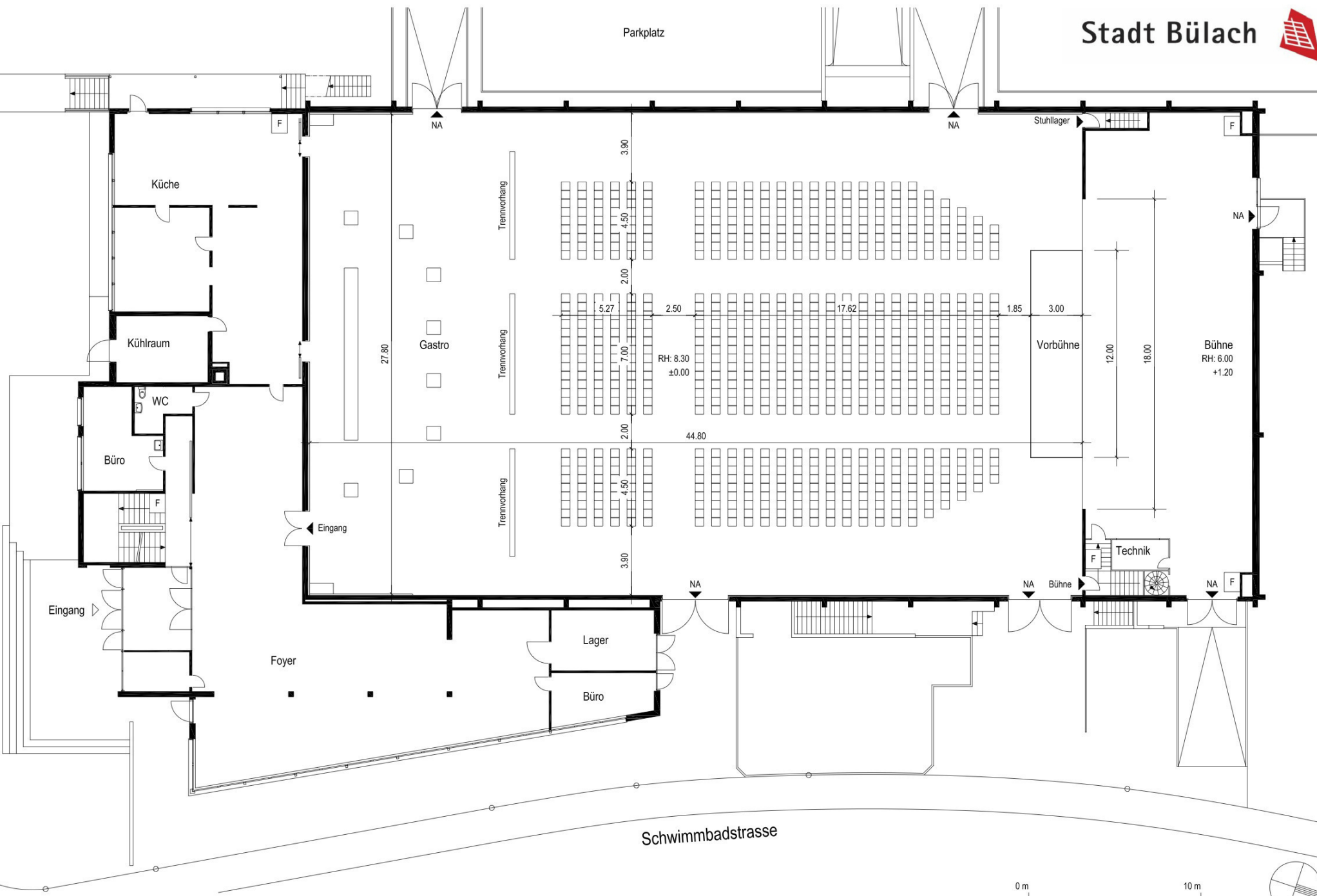
Allmendstrasse

Parkplatz



Allmendstrasse

Parkplatz





Allmendstrasse

Parkplatz

